
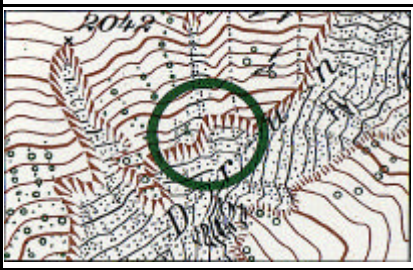
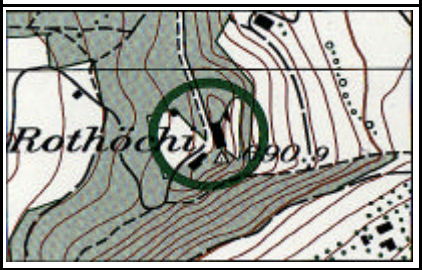
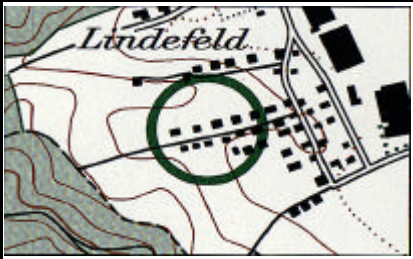
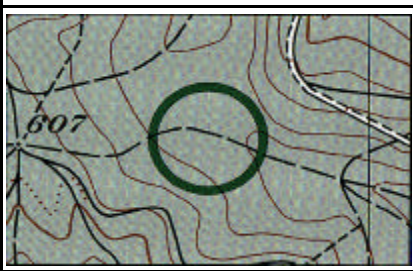
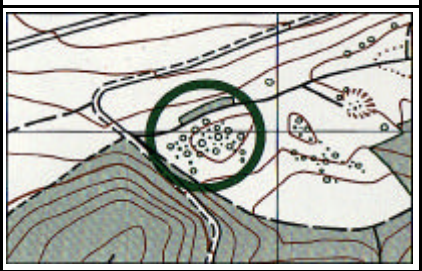
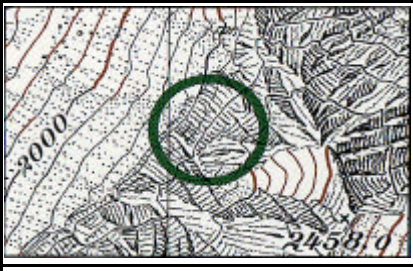
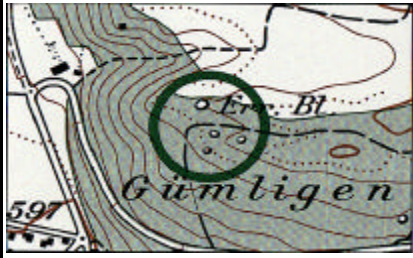
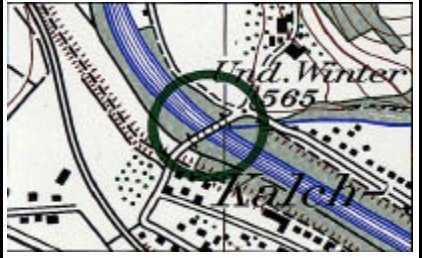

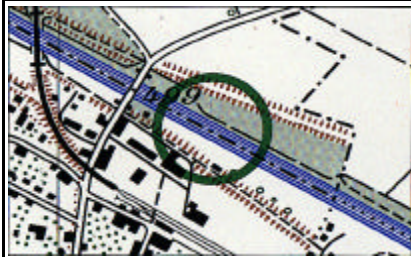


	<p>1. Klass-Strasse</p>	
	<p>2. Klass-Strasse</p>	<p>Campingplatz</p>
	<p>3. Klass-Strasse</p>	
	<p>Antennenanlage</p>	<p>Damm</p>
	<p>Aussichtsturm</p>	
	<p>Autobahn</p>	<p>Denkmal</p>
	<p>Brunnen</p>	

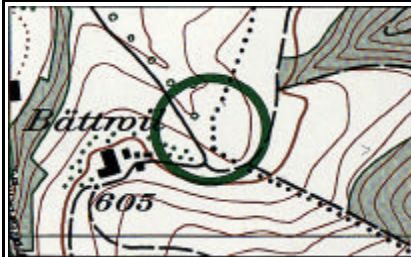
	<p>einzelner Baum</p>	<p>Galerie</p>
	<p>Erdschlipf</p>	
	<p>Fahrweg</p>	<p>Gasthof</p>
	<p>Feldweg</p>	
	<p>Fels / Geröll</p>	<p>Gebüsch</p>
	<p>Felsblock</p>	
	<p>Fussweg</p>	<p>gedeckte Brücke</p>



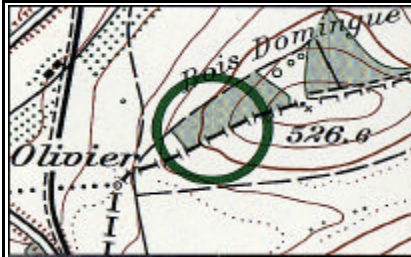
Wegspur



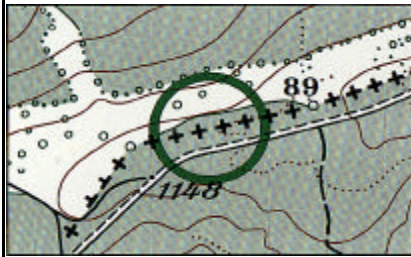
Bezirksgrenze



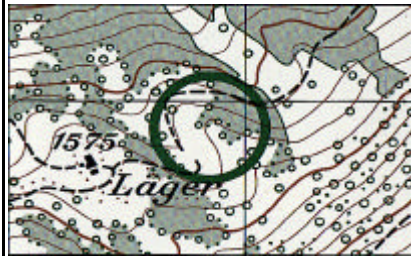
Gemeindegrenze



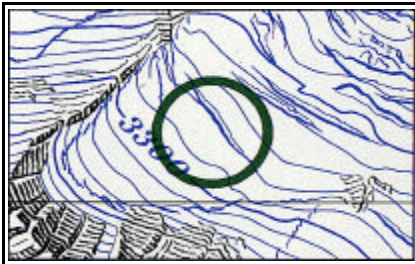
Kantonsgrenze



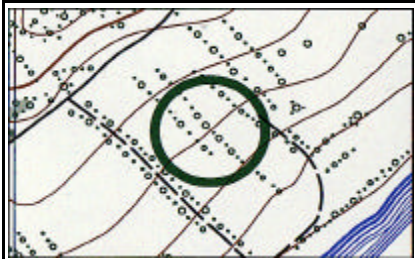
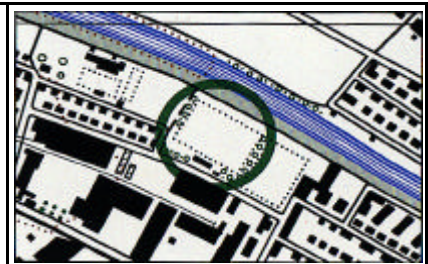
Landesgrenze



lockerer Waldrand



Gletscherspalte

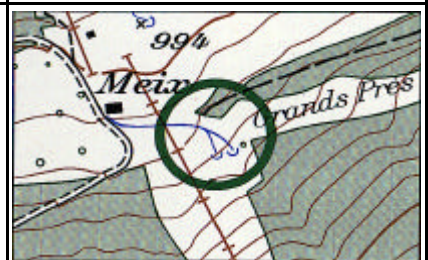


Hecke

Platz

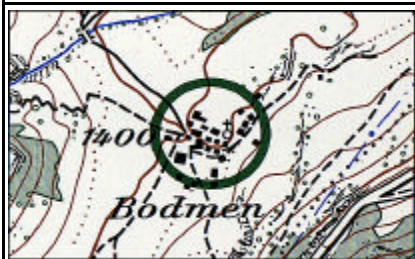


Hochkamin

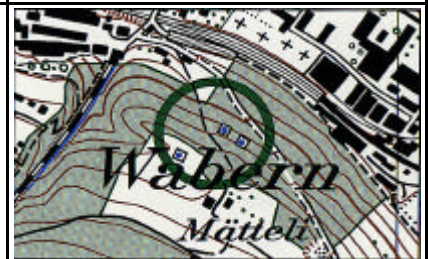


Höhle

Quelle



Kapelle

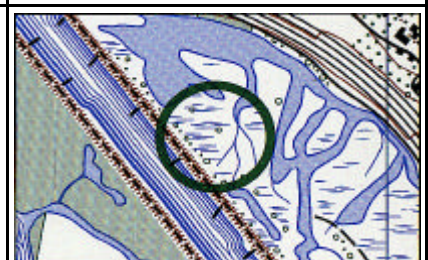


Luftseilbahn

Reservoir



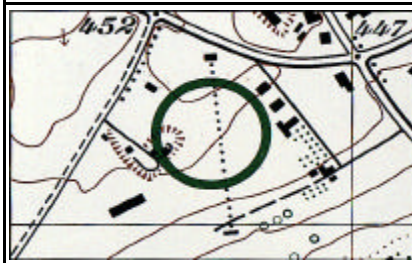
Normalspurbahn
mehrspurig



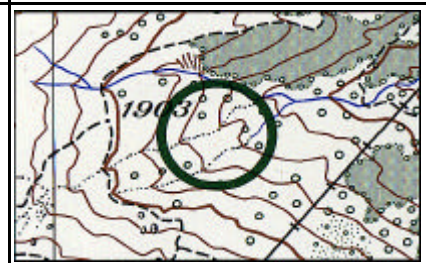


Ruine

Sumpf

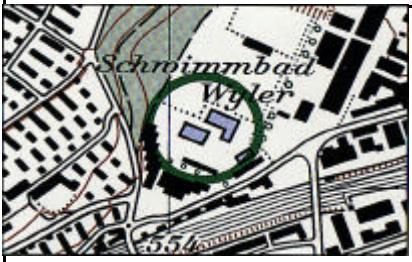


Schiesstand

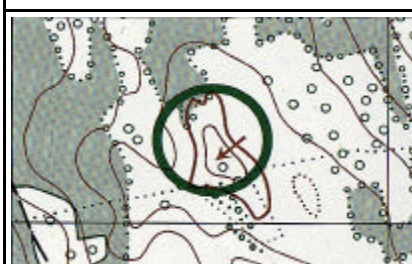
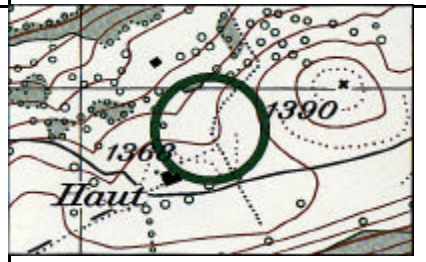


Schmalspurbahn

Trockenrinne



Schwimmbad

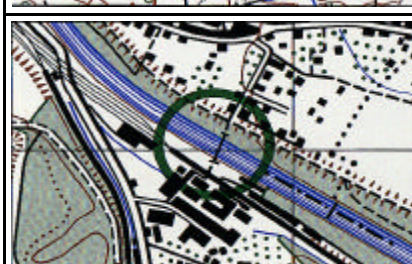


Senke

Trockenmauer



Skilift



Steg

Wasserfall

